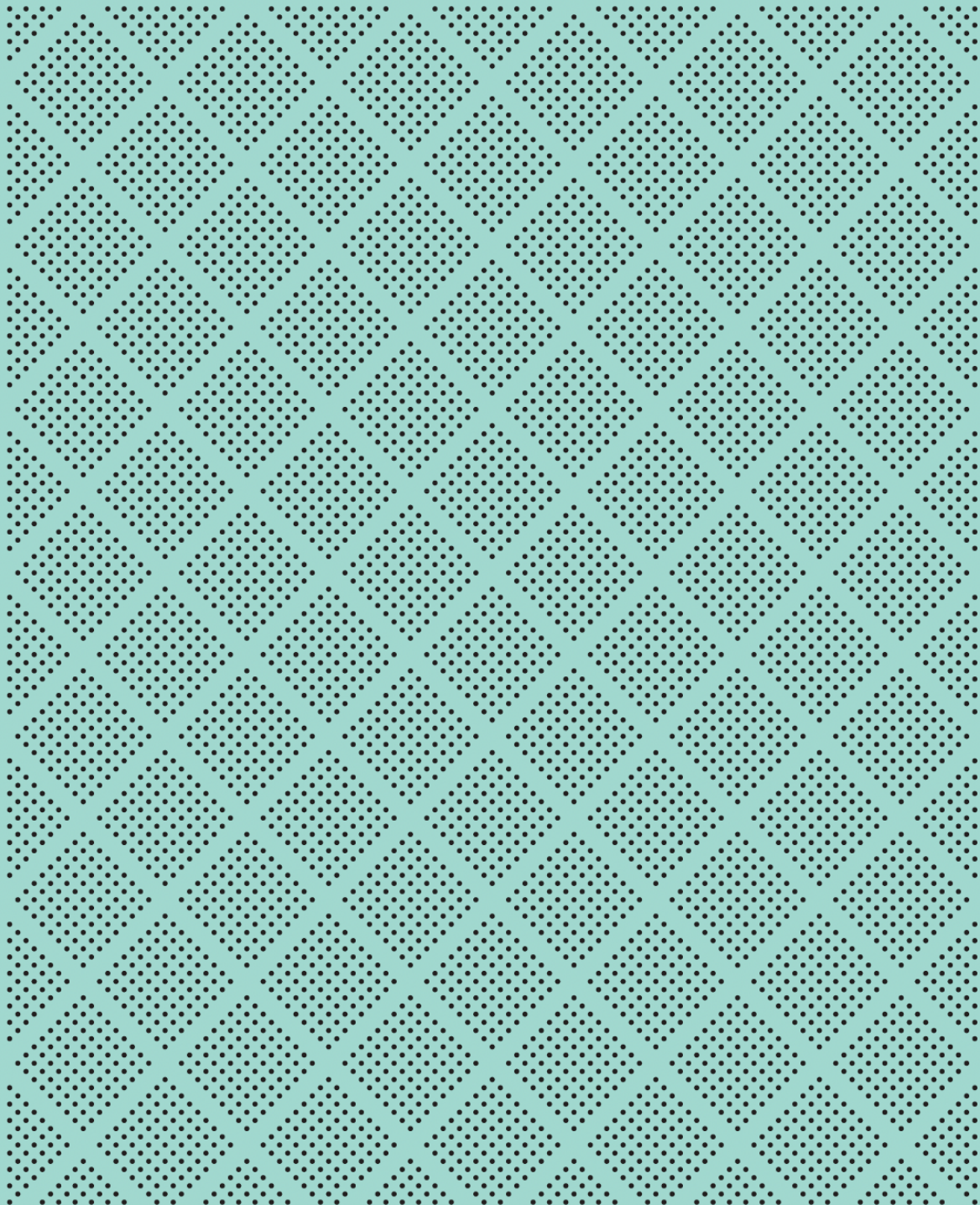


Monthly Fund Fact Sheets Single Sector Funds



SINGLE SECTOR FUND



Mint Australasian Equity Fund

Investment Objective

The fund aims to provide investors with long-term capital growth by investing in Australian and New Zealand listed equities. The objective is to outperform the S&P/NZX50 Gross Index after fees and expenses, over the medium to long term.

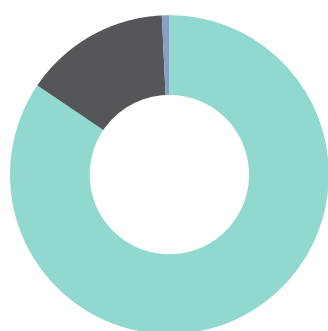
Performance

Rolling periods	1 month	3 months	1 Year	3 Years	5 Years	10 Years	Since inception
Mint Australasian Equity Fund	2.79%	4.22%	4.09%	-0.31%	4.38%	8.96%	8.49%
S&P/NZX50 Gross Index	3.10%	2.84%	1.86%	-1.22%	4.22%	8.94%	6.66%

Calendar Years	YTD	2023	2022	2021	2020	2019	2018
Mint Australasian Equity Fund	4.22%	4.33%	-12.33%	-1.46%	15.64%	26.74%	5.45%
S&P/NZX50 Gross Index	2.84%	2.59%	-11.97%	-0.44%	13.92%	30.42%	4.92%

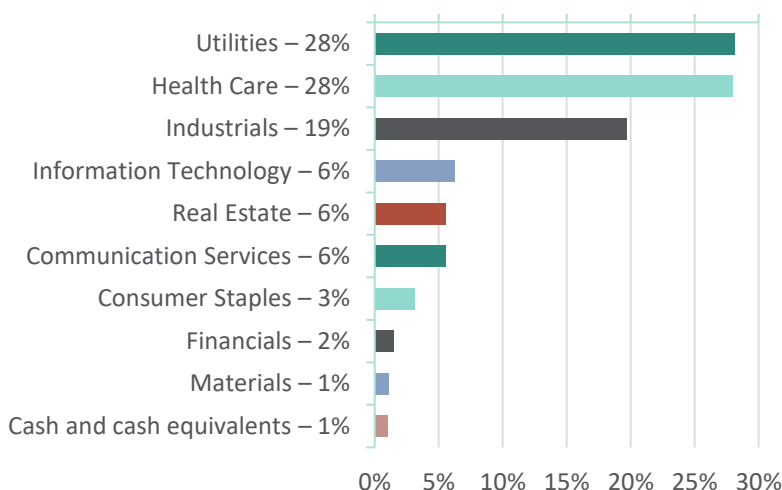
Performance returns greater than 3 months are per annum. Returns are after fees and before investor tax. Net after tax performance can be found in the latest Quarterly Fund Update, available on our website.

Asset Exposures

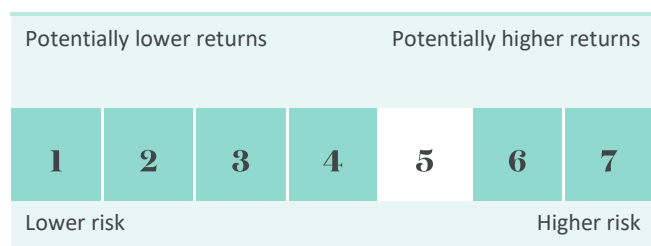


- New Zealand Equities – 84%
- Australian Equities – 15%
- Cash and Cash Equivalents – 1%

Sector Allocation



Latest Risk Indicator



Key Fund Facts

Date of Inception:	15 February 2007
Fund Size:	\$183 million
Unit Price:	\$4.0085
Number of Holdings:	30
Benchmark:	S&P/NZX50 Gross Index
Latest FX Hedging:	97%
Total fund fee:	1.19%

Largest Active Weights

Top 5 Overweight

CSL Limited	Mercury NZ Limited
Meridian Energy Limited	Chorus Limited
Summerset Group Holdings Limited	Fletcher Building Limited
Infratil Limited	Spark New Zealand Limited
Megaport Limited	EBOS Group Limited

Top 5 Underweight

CSL Limited	Mercury NZ Limited
Meridian Energy Limited	Chorus Limited
Summerset Group Holdings Limited	Fletcher Building Limited
Infratil Limited	Spark New Zealand Limited
Megaport Limited	EBOS Group Limited



Portfolio Manager, John Middleton

BA

John has more than two decades of experience and joined Mint from ANZ Investments where he was Head of Australasian Equity Research. During this time, he was also heavily involved in corporate broking.

At Mint, John is Portfolio Manager for the Australasian Equity Fund and the Australasian Property Fund and provides research coverage across a number of sectors.

SINGLE SECTOR FUND



Mint New Zealand SRI Equity Fund

Investment Objective

The fund aims to provide investors with long-term capital growth by investing in New Zealand listed equities. The Fund has been designed to meet specific responsible investment criteria, with the aim of building a portfolio where the holdings in aggregate, generate a better ESG score in our systems than the benchmark. The objective is to outperform the S&P/NZX50 Gross Index after fees and expenses over the medium to long term.

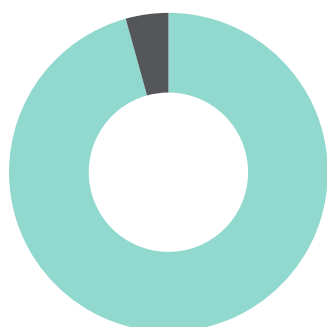
Performance

Rolling periods	1 month	3 months	1 Year	3 Years	5 Years	10 Years	Since inception
Mint New Zealand SRI Equity Fund	2.52%	2.27%	2.21%	-0.97%	4.89%	n/a	6.89%
S&P/NZX50 Gross Index	3.10%	2.84%	1.86%	-1.22%	4.22%	n/a	6.47%

Calendar Years	YTD	2023	2022	2021	2020	2019	2018
Mint New Zealand SRI Equity Fund	2.27%	3.67%	-12.47%	0.28%	17.48%	28.85%	5.94%
S&P/NZX50 Gross Index	2.84%	2.59%	-11.97%	-0.44%	13.92%	30.42%	4.92%

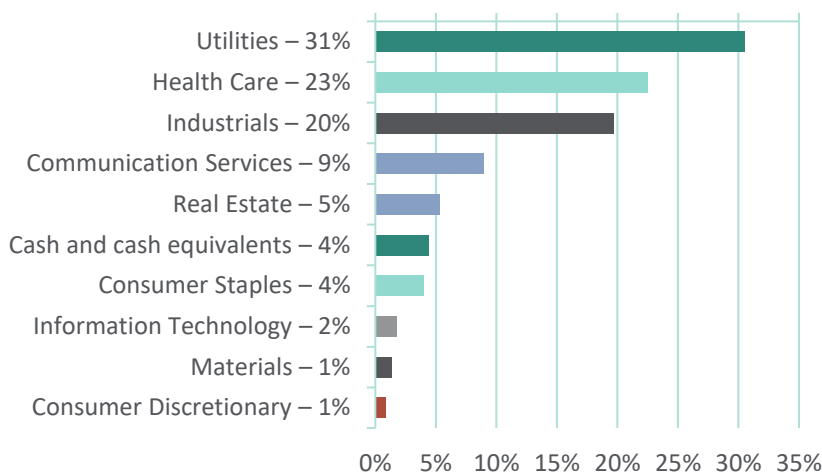
Performance returns greater than 3 months are per annum. Returns are after fees and before investor tax. Net after tax performance can be found in the latest Quarterly Fund Update, available on our website.

Asset Exposures

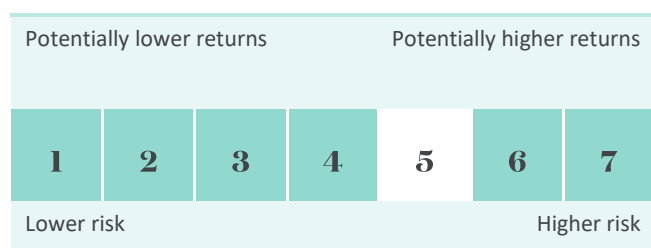


- New Zealand Equities – 96%
- Cash and Cash Equivalents – 4%

Sector Allocation



Latest Risk Indicator



Key Fund Facts

Date of Inception:	19 June 2017
Fund Size:	\$135 million
Unit Price:	\$1.5385
Number of Holdings:	25
Benchmark:	S&P/NZX50 Gross Index
Total fund fee:	0.95%

Largest Active Weights

Top 5 Overweight

Infratil Limited	Mercury NZ Limited
Summerset Group Holdings Limited	Chorus Limited
Contact Energy Limited	SKYCITY Entertainment Group Limited
Meridian Energy Limited	Fletcher Building Limited
Serko Limited	EBOS Group Limited

Top 5 Underweight



Portfolio Manager, David Fyfe

BCom (Hons.), CFA

David has over 15 years' experience in the financial industry. Previously he worked at BT Funds Management (NZ) as both a Quantitative and Equity Analyst undertaking sector research specialising in Transportation, Utilities and Technology in both New Zealand and Australian markets.

At Mint, David is the Portfolio Manager for the NZ SRI Equity Fund and the Australasian Property Fund and provides research across a number of sectors.

SINGLE SECTOR FUND



Mint Australasian Property Fund

Investment Objective

The fund aims to provide investors with long-term capital growth by investing in New Zealand and Australian listed property and property related securities. The Fund has an investment objective of outperforming the S&P/NZX All Real Estate (Industry Group) Gross Index after fees and expenses, over the medium to long term.

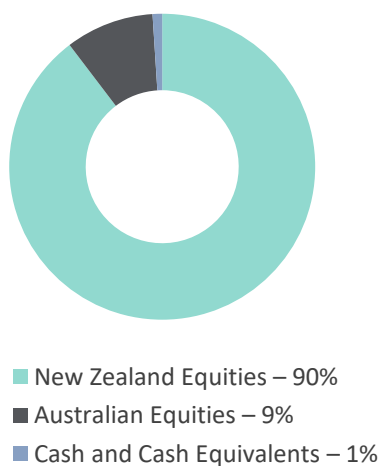
Performance

Rolling periods	1 month	3 months	1 Year	3 Years	5 Years	10 Years	Since inception
Mint Australasian Property Fund	3.99%	1.50%	6.80%	-2.86%	1.76%	6.61%	5.34%
S&P/NZX All Real Estate (Industry Group) Gross	3.77%	-0.04%	3.56%	-4.18%	1.26%	7.52%	6.23%

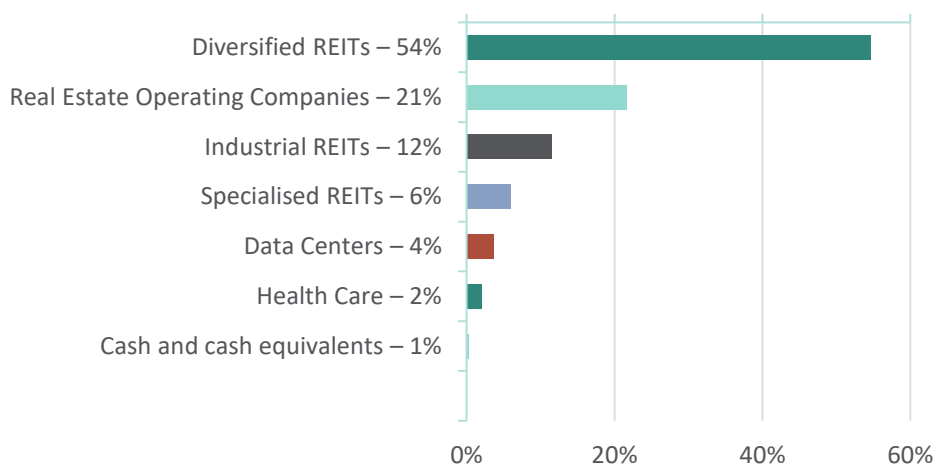
Calendar Years	YTD	2023	2022	2021	2020	2019	2018
Mint Australasian Property Fund	1.50%	7.00%	-22.96%	5.63%	3.52%	28.91%	6.08%
S&P/NZX All Real Estate (Industry Group) Gross	-0.04%	5.48%	-22.30%	2.89%	4.41%	31.25%	9.84%

Performance returns greater than 3 months are per annum. Returns are after fees and before investor tax. Net after tax performance can be found in the latest Quarterly Fund Update, available on our website.

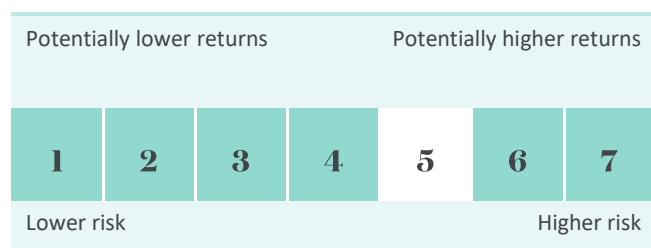
Asset Exposures



Sector Allocation



Latest Risk Indicator



Key Fund Facts

Date of Inception:	1 December 2007
Fund Size:	\$22 million
Unit Price:	\$2.3296
Number of Holdings:	13
Benchmark:	S&P/NZX All Real Estate (Industry Group) Gross Index
Latest FX Hedging:	98%
Total fund fee:	0.98%

Largest Active Weights

Top 5 Overweight

Goodman Property Trust	Vital Healthcare Property Trust
Nextdc Limited	Kiwi Property Group Limited
Goodman Group	Argosy Property Limited
Precinct Properties Group	Property For Industry Limited
Charter Hall Group	Investore Property Limited

Top 5 Underweight



Portfolio Manager, John Middleton

BA

John has more than two decades of experience and joined Mint from ANZ Investments where he was Head of Australasian Equity Research. During this time, he was also heavily involved in corporate broking.

At Mint, John is Portfolio Manager for the Australasian Equity Fund and the Australasian Property Fund and provides research coverage across a number of sectors.



Portfolio Manager, David Fyfe

BCom (Hons.), CFA

David has over 15 years' experience in the financial industry. Previously he worked at BT Funds Management (NZ) as both a Quantitative and Equity Analyst undertaking sector research specialising in Transportation, Utilities and Technology in both New Zealand and Australian markets.

At Mint, David is the Portfolio Manager for the NZ SRI Equity Fund and the Australasian Property Fund and provides research across a number of sectors.

Responsible Investing

For additional information on our Responsible Investing activities, please refer to our website where you will find our Responsible Investing Policy, Stewardship Policy, Proxy Voting Statistics and our Quarterly Sustainability Report: [Responsible Investing | Mint Asset Management](#)

The Mint NZ SRI Fund latest ESG score can be found here: [NZ SRI Fund Overview](#)

Signatory of:



TOITŪ



ISO 14064-1
ORGANISATION



STEWARDSHIP CODE
AOTEAROA NEW ZEALAND



Responsible
Investment
Association
Australasia

**For more information on
our Funds, please contact:**

Level 29, SAP Tower
151 Queen Street, Auckland
New Zealand

P 0800 646 833

E info@mintasset.co.nz

www.mintasset.co.nz