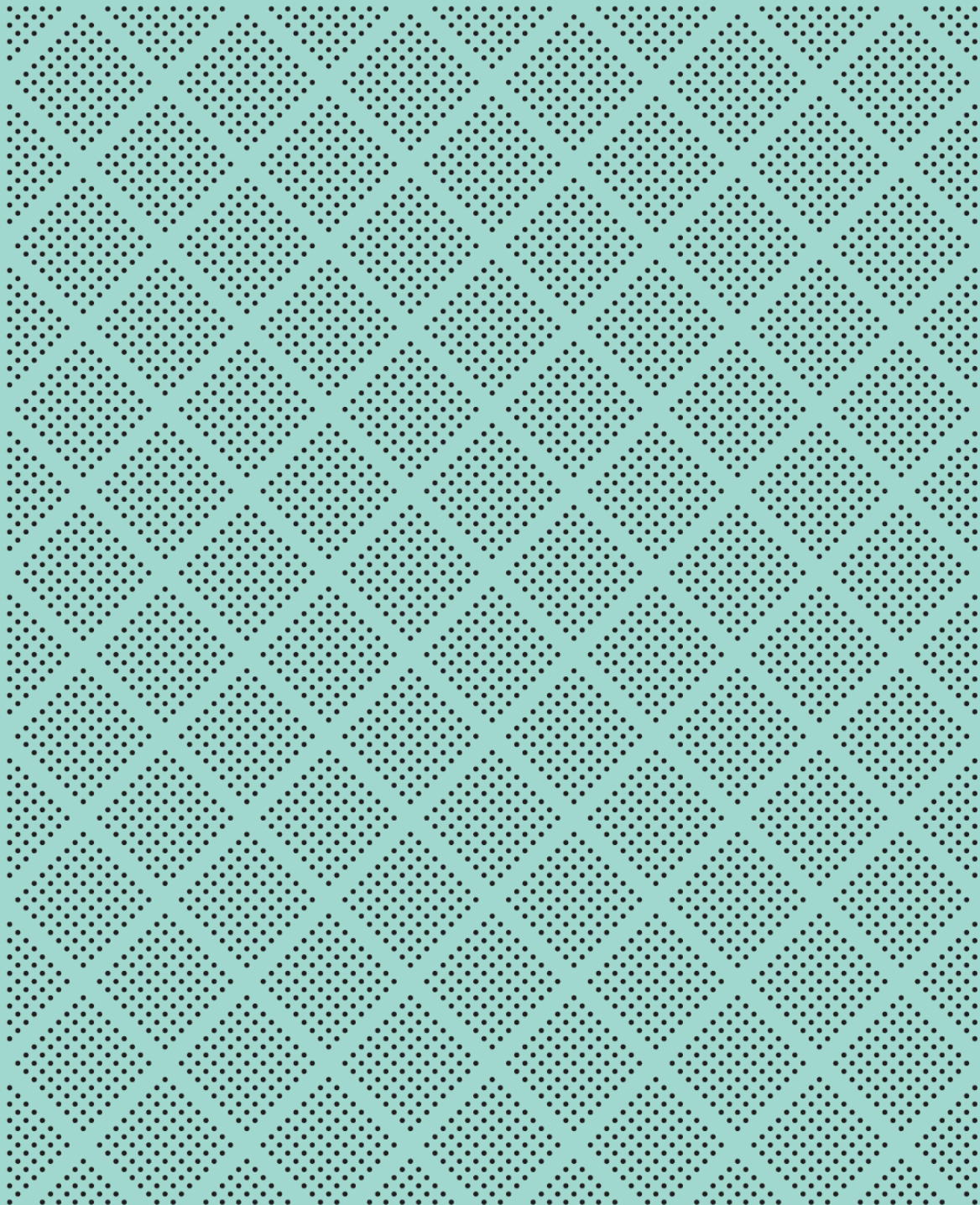


As of 30 June 2024

Monthly Fund Fact Sheet

Mint Diversified Alternatives Fund



DIVERSIFIED FUNDS



Mint Diversified Alternatives Fund

Investment Objective

The objective of the Fund is to provide access to alternative asset classes which have a low correlation to traditional assets. These alternative asset classes can include, but are not limited to, private equity, real estate, renewable energy, and hedge fund strategies. The Fund aims to provide capital growth through returns in excess of the benchmark HFRI Fund of Funds Composite Index (NZD Hedged), after fees and expenses, over the medium to long term.

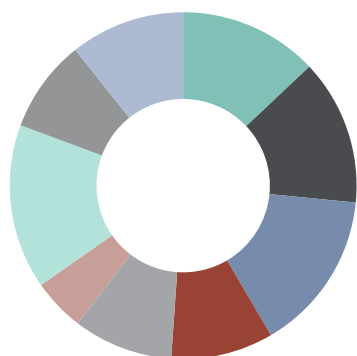
Performance

Rolling periods	1 month	3 months	1 Year	3 Years	5 Years	10 Years	Since inception
Mint Diversified Alternatives Fund	-0.51%	1.10%	0.81%	n/a	n/a	n/a	0.81%
HFRI Fund of Funds Composite Index (NZD Hedged)*	0.21%	1.05%	8.58%	n/a	n/a	n/a	8.58%

Calendar Years	YTD	2023	2022	2021	2020	2019	2018
Mint Diversified Alternatives Fund	-0.36%	1.17%	n/a	n/a	n/a	n/a	n/a
HFRI Fund of Funds Composite Index (NZD Hedged)*	4.68%	3.45%	n/a	n/a	n/a	n/a	n/a

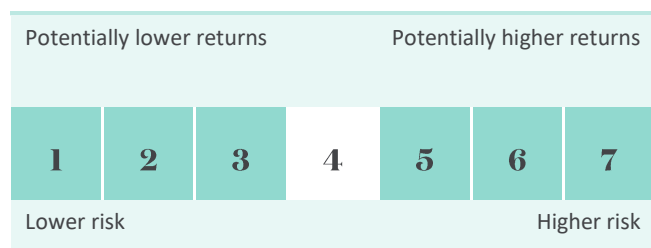
Performance returns greater than 3 months are per annum. Returns are after fees and before investor tax. Net after tax performance can be found in the latest Quarterly Fund Update, available on our website. *Details on the makeup of the Composite Index can be found in the Statement of Investment Policy and Objectives which is available on our website.

Asset Exposures



- Long/Short Equity – 13%
- Managed Futures – 14%
- Global Discretionary Macro – 15%
- Private Equity – 10%
- Infrastructure – 9%
- Cash – 5%
- Absolute Return – 15%
- Real Estate – 9%
- Renewables – 11%

Latest Risk Indicator



Key Fund Facts

Date of Inception:	30 June 2023
Fund Size:	\$407k
Unit Price:	\$1.0081
Typical Asset Mix:	95% Alternatives
Benchmark:	HFRI Fund of Funds Composite Index (NZD Hedged)
Latest FX Hedging:	101%
Total fund fee:	1.34%

Contribution to Return by Asset Class

Asset Class	Contribution to Return	Portfolio Weight
Long/Short Equity	0.3%	13.0%
Managed Futures	0.3%	13.6%
Global Discretionary Macro	0.3%	15.0%
Private Equity	0.1%	9.6%
Infrastructure	0.0%	9.3%
Cash	0.0%	4.9%
Absolute Return	-0.2%	15.4%
Real Estate	-0.3%	8.7%
Renewables	-0.7%	10.7%
Total	-0.5%	100.0%



Portfolio Manager, Marek Krzeczowski

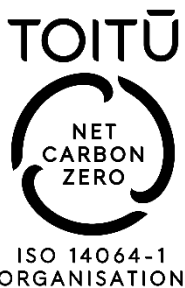
MSc

Marek has over 16 years' experience in the investment sector focusing primarily on quantitative analysis, investment research and financial modelling. He arrived in New Zealand in 2016 from Edinburgh where he managed the Investment Research Team at Tcam Asset Management and was responsible for helping to formulate and implement the firm's investment strategy.

At Mint, Marek is the Portfolio Manager for the Multi-asset class funds. He is also responsible for Strategic and Tactical Asset Allocation.

Responsible Investing

For additional information on our Responsible Investing activities, please refer to our website where you will find our Responsible Investing Policy, our Stewardship Policy, Proxy Voting Statistics and our Quarterly Sustainability Report: [Responsible Investing | Mint Asset Management](#)



STEWARDSHIP CODE
AOTEAROA NEW ZEALAND



For more information on our Funds, please contact:

Level 29, SAP Tower
151 Queen Street, Auckland
New Zealand

P 0800 646 833
E info@mintasset.co.nz
www.mintasset.co.nz