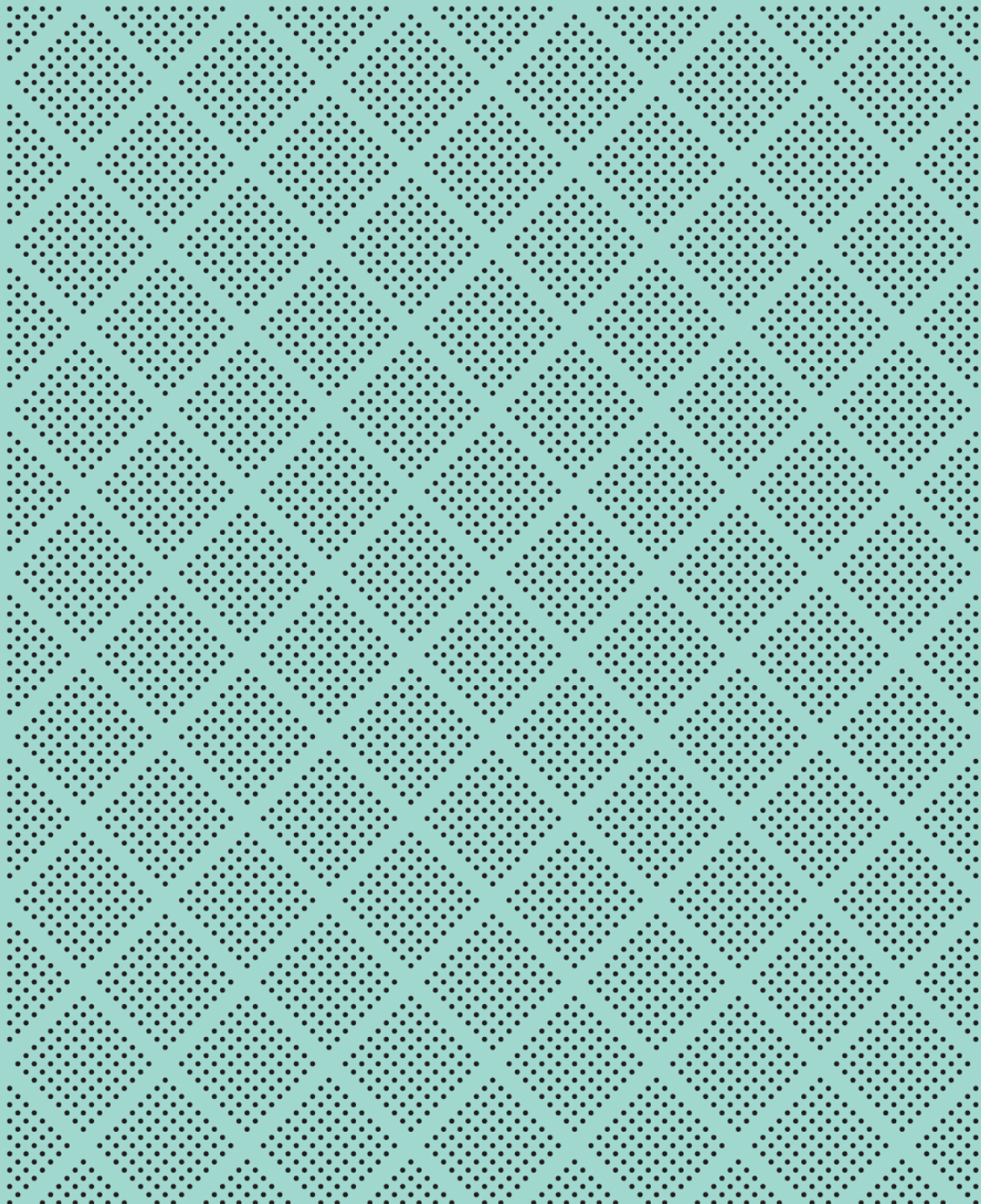


As of 30 June 2025

# Monthly Fund Fact Sheets Diversified Funds



DIVERSIFIED FUNDS



# Mint Diversified Income Fund

## Investment Objective

This is a multi-asset class Fund that offers diversification by investing across a number of asset classes both in New Zealand and internationally. The objective of the Fund is to deliver a total return (through a combination of income and capital growth) in excess of the Consumers Price Index (CPI) by 3% per annum, before fees, over the medium to long term.

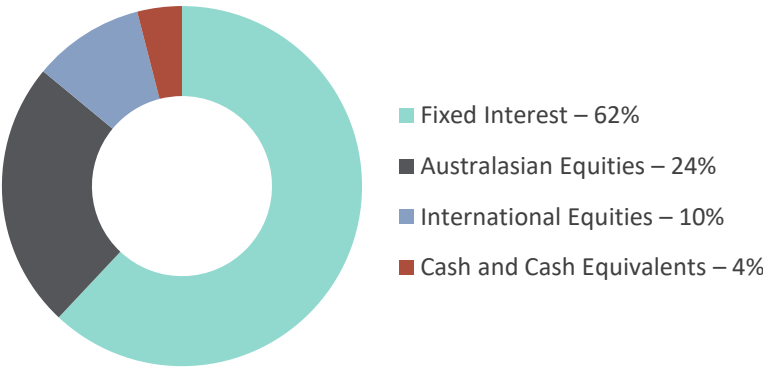
## Performance

| Rolling periods              | 1 month | 3 months | 1 Year | 3 Years | 5 Years | 10 Years | Since inception |
|------------------------------|---------|----------|--------|---------|---------|----------|-----------------|
| Mint Diversified Income Fund | 0.99%   | 2.45%    | 8.18%  | 5.77%   | 3.23%   | 3.89%    | 4.06%           |
| 90 Day Bank Bill + 3%        | 0.53%   | 1.67%    | 7.88%  | 8.05%   | 6.26%   | 5.70%    | 5.79%           |
| Composite Index*             | 1.20%   | 2.38%    | 8.03%  | 5.84%   | 2.87%   | 4.68%    | 5.05%           |

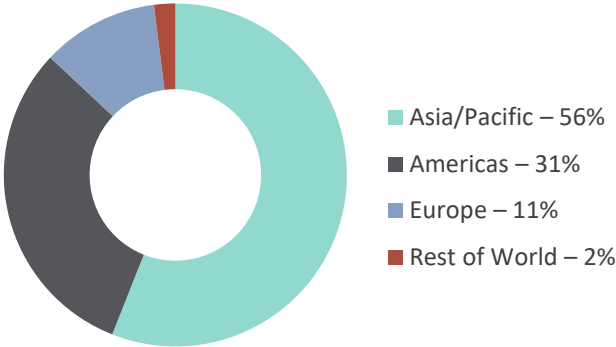
| Calendar Years               | YTD   | 2024  | 2023  | 2022   | 2021   | 2020  | 2019   |
|------------------------------|-------|-------|-------|--------|--------|-------|--------|
| Mint Diversified Income Fund | 1.61% | 7.39% | 7.36% | -8.73% | 2.73%  | 5.56% | 8.05%  |
| 90 Day Bank Bill + 3%        | 3.51% | 8.78% | 8.58% | 5.34%  | 3.45%  | 3.71% | 4.76%  |
| Composite Index*             | 1.50% | 9.07% | 7.96% | -8.96% | -0.54% | 6.69% | 11.88% |

Performance returns greater than 3 months are per annum. Returns are after fees and before investor tax. Net after tax performance can be found in the latest Quarterly Fund Update, available on our website. \*Details on the makeup of the Composite Index can be found in the Statement of Investment Policy and Objectives which is available on our website.

## Asset Exposures



## Geographic Diversification<sup>(1)</sup>



(1) Based on the revenue exposure of all equity holdings

## Latest Risk Indicator

| Potentially lower returns |   |   | Potentially higher returns |   |   |   |
|---------------------------|---|---|----------------------------|---|---|---|
| 1                         | 2 | 3 | 4                          | 5 | 6 | 7 |
| Lower risk                |   |   | Higher risk                |   |   |   |

## Key Fund Facts

|                    |                        |
|--------------------|------------------------|
| Date of Inception: | 31 August 2014         |
| Fund Size:         | \$57 million           |
| Unit Price:        | \$1.0609               |
| Typical Asset Mix: | 30% Growth/ 70% Income |
| Benchmark:         | Composite Index        |
| Yield to Maturity: | 4.48%                  |
| Latest FX Hedging: | 98%                    |
| Total fund fee:    | 0.98%                  |

## 10 Largest equity positions

|  |      |
|--|------|
| Skellerup Holdings Limited                     | 1.2% |
| EBOS Group Limited                             | 1.2% |
| Summerset Group Holdings Limited               | 1.2% |
| Meridian Energy Limited                        | 1.2% |
| Infratil Limited                               | 1.2% |
| Telix Pharmaceuticals Limited                  | 1.2% |
| Fisher & Paykel Healthcare Corporation Limited | 1.2% |
| CSL Limited                                    | 1.2% |
| Contact Energy Limited                         | 1.2% |
| SRG Global Limited                             | 1.1% |

## 5 Largest bond issuers

|                                |      |
|--------------------------------|------|
| Contact Energy Limited         | 4.0% |
| Mercury NZ Limited             | 3.7% |
| Transpower New Zealand Limited | 3.6% |
| Chorus Limited                 | 3.5% |
| Meridian Energy Limited        | 3.4% |



### Portfolio Manager, Marek Krzeczowski

MSc

Marek has over 16 years' experience in the investment sector focusing primarily on quantitative analysis, investment research and financial modelling. He arrived in New Zealand in 2016 from Edinburgh where he managed the Investment Research Team at Tcam Asset Management and was responsible for helping to formulate and implement the firm's investment strategy.

At Mint, Marek is the Portfolio Manager for the Multi-asset class funds. He is also responsible for Strategic and Tactical Asset Allocation.



### Assistant Portfolio Manager, Ryan Falls

BSc, FIA

Ryan has over 10 years' experience in the investment industry, across advisory and portfolio management roles. He began his career at Willis Towers Watson in London, providing quantitative and qualitative investment advice to insurance and absolute-return clients. He then joined Redington's Asset Liability Management and Investment Strategy team, delivering quantitative analysis, research and financial risk modelling for defined-benefit pension funds, insurers, and other institutional investors.

Ryan is a Fellow of the Institute & Faculty of Actuaries, specializing in Investment & Finance. At Mint Asset Management, Ryan is an Assistant Portfolio Manager focused on managing fixed-income assets within the Diversified Funds and supporting on strategic/tactical asset allocation.

DIVERSIFIED FUNDS



# Mint Diversified Growth Fund

## Investment Objective

This is a multi-asset class Fund that offers a diversified portfolio and aims to provide capital growth over the long term. The Fund invests primarily in New Zealand and international equities (including listed property if held) but will also hold cash and fixed interest securities. The objective of the Fund is to deliver returns in excess of the Consumers Price Index (CPI) by 4.5% per annum, before fees, over the medium to long term.

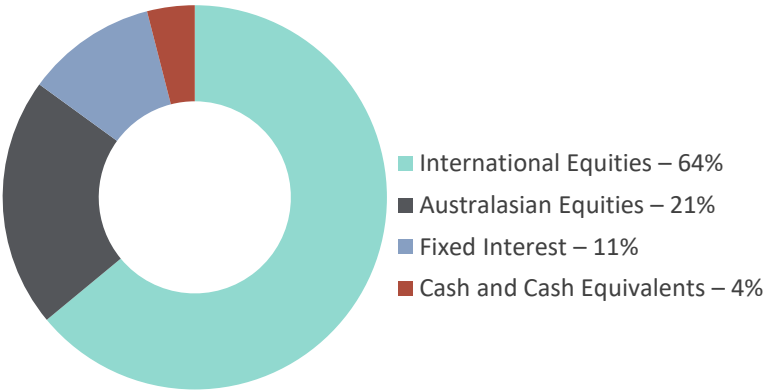
## Performance

| Rolling periods              | 1 month | 3 months | 1 Year | 3 Years | 5 Years | 10 Years | Since inception |
|------------------------------|---------|----------|--------|---------|---------|----------|-----------------|
| Mint Diversified Growth Fund | 2.00%   | 5.92%    | 9.13%  | 9.38%   | 7.40%   | n/a      | 8.22%           |
| 90 Day Bank Bill + 4.5%      | 0.66%   | 2.05%    | 9.50%  | 9.67%   | 7.85%   | n/a      | 7.46%           |
| Composite Index*             | 2.72%   | 6.27%    | 10.79% | 11.49%  | 8.52%   | n/a      | 8.65%           |

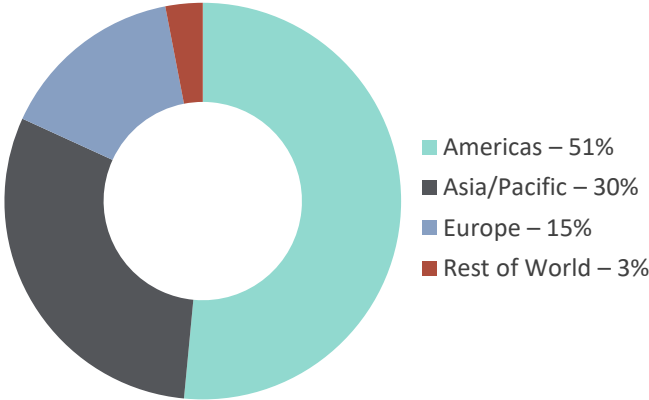
| Calendar Years               | YTD   | 2024   | 2023   | 2022    | 2021   | 2020   | 2019   |
|------------------------------|-------|--------|--------|---------|--------|--------|--------|
| Mint Diversified Growth Fund | 2.87% | 11.01% | 11.62% | -17.44% | 17.64% | 18.09% | 15.02% |
| 90 Day Bank Bill + 4.5%      | 4.28% | 10.41% | 10.21% | 6.92%   | 5.01%  | 5.27%  | 6.34%  |
| Composite Index*             | 3.52% | 15.37% | 14.32% | -14.02% | 10.79% | 10.67% | 21.85% |

Performance returns greater than 3 months are per annum. Returns are after fees and before investor tax. Net after tax performance can be found in the latest Quarterly Fund Update, available on our website. \*Details on the makeup of the Composite Index can be found in the Statement of Investment Policy and Objectives which is available on our website.

## Asset Exposures



## Geographic Diversification <sup>(2)</sup>



(2) Based on the revenue exposure of all equity holdings

## Latest Risk Indicator

| Potentially lower returns |   |   |   | Potentially higher returns |             |   |
|---------------------------|---|---|---|----------------------------|-------------|---|
| 1                         | 2 | 3 | 4 | 5                          | 6           | 7 |
| Lower risk                |   |   |   |                            | Higher risk |   |

## Key Fund Facts

|                    |                       |
|--------------------|-----------------------|
| Date of Inception: | 10 December 2018      |
| Fund Size:         | \$58 million          |
| Unit Price:        | \$1.6787              |
| Typical Asset Mix: | 80% Growth/20% Income |
| Benchmark:         | Composite Index       |
| Latest FX Hedging: | 98%                   |
| Total fund fee:    | 1.21%                 |

## 10 Largest equity positions

|                               |      |
|-------------------------------|------|
| Microsoft Corporation         | 1.9% |
| Amazon.com, Inc.              | 1.8% |
| Visa Inc. Class A             | 1.8% |
| Netflix, Inc.                 | 1.7% |
| Boston Scientific Corporation | 1.6% |
| Abbott Laboratories           | 1.6% |
| SAP SE                        | 1.6% |
| Comcast Corporation Class A   | 1.5% |
| Aon Plc Class A               | 1.5% |
| NVIDIA Corporation            | 1.5% |

## 5 Largest bond issuers

|                         |      |
|-------------------------|------|
| Chorus Limited          | 1.2% |
| Contact Energy Limited  | 0.9% |
| Mercury NZ Limited      | 0.9% |
| Spark Finance Limited   | 0.8% |
| GMT Bond Issuer Limited | 0.8% |



### Portfolio Manager, Marek Krzeczowski

MSc

Marek has over 16 years' experience in the investment sector focusing primarily on quantitative analysis, investment research and financial modelling. He arrived in New Zealand in 2016 from Edinburgh where he managed the Investment Research Team at Tcam Asset Management and was responsible for helping to formulate and implement the firm's investment strategy.

At Mint, Marek is the Portfolio Manager for the Multi-asset class funds. He is also responsible for Strategic and Tactical Asset Allocation.



### Assistant Portfolio Manager, Ryan Falls

BSc, FIA

Ryan has over 10 years' experience in the investment industry, across advisory and portfolio management roles. He began his career at Willis Towers Watson in London, providing quantitative and qualitative investment advice to insurance and absolute-return clients. He then joined Redington's Asset Liability Management and Investment Strategy team, delivering quantitative analysis, research and financial risk modelling for defined-benefit pension funds, insurers, and other institutional investors.

Ryan is a Fellow of the Institute & Faculty of Actuaries, specializing in Investment & Finance. At Mint Asset Management, Ryan is an Assistant Portfolio Manager focused on managing fixed-income assets within the Diversified Funds and supporting on strategic/tactical asset allocation.



## Responsible Investing

For additional information on our Responsible Investing activities, including relevant Policies and Disclosures, please refer to our website: [Responsible Investing | Mint Asset Management](#)



**For more information on  
our Funds, please contact:**

Level 29, SAP Tower  
151 Queen Street, Auckland  
New Zealand

**P** 0800 646 833  
**E** [info@mintasset.co.nz](mailto:info@mintasset.co.nz)  
[www.mintasset.co.nz](http://www.mintasset.co.nz)